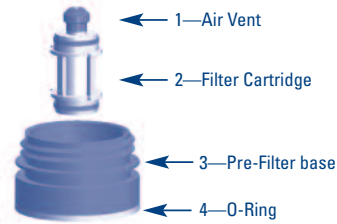




Water Bottle Pre-Filter User's Guide

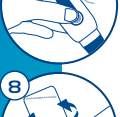
The Water Bottle Pre-Filter by SteriPEN® is designed to remove large particulate matter from drinking water prior to purification treatment. While the Pre-Filter can be used in conjunction with any purification method, it is specifically designed for use with the SteriPEN® Classic and Journey^{LED} ultraviolet water purifiers.



The Pre-Filter can be used in two ways: "Pour-through" and "Immersion."



Pour-through



- 1 Screw Pre-Filter base onto Nalgene® type 32 fl. oz. (1 liter) wide-mouth bottle until tight.
- 2 Insert filter cartridge into opening in Pre-Filter base with open end of cartridge down.
- 3 Twist filter cartridge to lock in place and pull air vent valve open.
- 4 Pour water through filter cartridge until bottle is filled to desired level.
- 5 Remove Pre-Filter base and cartridge as a unit from bottle. Remove cartridge from filter base and wipe away particulates from base with cloth. Rinse particulates from cartridge if necessary.

If using SteriPEN® Classic or Journey^{LED}, follow steps 6, 7 and 8.
If using SteriPEN® Adventurer or Traveler, follow steps 9 and 10.

- 6 After cleaning, screw Pre-Filter base onto water bottle until tight.
- 7 Activate SteriPEN® Classic or Journey^{LED} and insert lamp end into opening in Pre-Filter base until SteriPEN® creates a watertight seal.
- 8 While holding SteriPEN® in place, invert water bottle and SteriPEN® together. Purify per Classic or Journey^{LED} User's Guide. When treatment is complete, turn bottle and SteriPEN® upright and remove SteriPEN®. See "Storing the Pre-Filter."

If using SteriPEN® Adventurer or Traveler, follow steps 9 and 10.

- 9 After cleaning, screw Filter Cartridge into base with the air vent down; this is the storage position (see back). Next, tighten the Pre-Filter base onto the lid of the water bottle.
- 10 Activate SteriPEN® Adventurer or Traveler, then insert into bottle. Purify per Adventurer or Traveler User's Guide.

Immersion

Note: The "O" ring on the rim of the filter base seals against the flange of the water bottle neck to prevent untreated water from contaminating the threads and outer rim of the bottle.

- 1 Screw Pre-Filter base onto Nalgene® type 32 fl. oz. (1 liter) wide-mouth bottle until tight.
- 2 Insert filter cartridge into opening in Pre-Filter base with open end of cartridge down. Twist filter cartridge until it locks into place and pull air vent valve open.
- 3 Completely immerse water bottle with Pre-Filter end up.
- 4 Once water bottle is filled to desired level, remove from water and wipe away droplets from filter base, making sure the upper portion of water bottle is dry.
- 5 Remove Pre-Filter base and cartridge as a unit from bottle. Remove cartridge from filter base and wipe away particulates from filter base with cloth. Rinse particulates from cartridge if necessary.

If using SteriPEN® Classic or Journey^{LED}, follow steps 6, 7 and 8.
If using SteriPEN® Adventurer or Traveler follow steps 9 and 10.

Tip: To help water to flow freely through the filter, wet the pre-filter mesh by submerging the filter cartridge in water before use. Rub the mesh with a clean cloth until it becomes thoroughly saturated.



Water Bottle Pre-Filter User's Guide

Storing the Pre-Filter



① Push air vent valve closed and dry off valve end of filter cartridge with cloth. Install cartridge, valve end down, into opening in Pre-Filter base. Twist filter cartridge to lock in place.



② Pre-Filter may be stored on bottle. Screw water bottle cap onto top of filter base. To drink, unscrew Pre-Filter and water bottle cap as a unit.

The Pre-Filter by SteriPEN® weighs less than 2 ounces (42 grams) and may be stored on a Nalgene® type wide-mouth bottle. Pre-Filter cartridges are made from durable nylon screen and may be rinsed and reused many times. Occasional washing of the Pre-Filter base and cartridge with mild soap solution is advisable.

Replacement Pre-Filter cartridges are available at SteriPEN® retailers.

Package Contents:

Pre-Filter base, Filter Cartridge, User's Guide

Product Specifications:

Weight: 42 grams (1.5 oz.)

Dimensions: 7 cm (2.7 in.) diameter x 5 cm (1.8 in.) height

Product Features:

- 4x4 micron durable nylon screen
- Reversible cartridge for compact storage
- Dual water seals for preventing drinking surface (bottle threads) contamination
- Fits most standard wide-mouth water bottles



Replacement Filter Cartridge

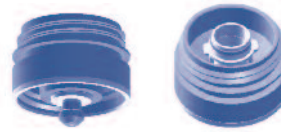
To replace filter cartridge:



- ① Attach filter base to water bottle
- ② Insert filter cartridge
- ③ Twist filter cartridge to lock in place and pull air vent valve open.



- ④ Pour water through Pre-Filter
- Pre-Filter cartridge is re-usable after cleaning.*



Pre-Filter Storage Position

WARNINGS:

- This Water Bottle Pre-Filter is designed to remove large particulate matter from water. It will not remove microbiological or chemical contaminants.
- Do not use this Water Bottle Pre-Filter with liquids other than water.
- In some cases where fine sediment is present, water may be collected in a large container and clarified by allowing sediment to settle. When particulates are very small, this Water Bottle Pre-Filter may be ineffective in clarifying water. If clear water cannot be obtained, see SteriPEN® water purifier's user guide for how to treat turbid or cloudy water.
- While the Pre-Filter is designed to prevent untreated water from contaminating bottle threads, bottle neck and threads should be inspected for droplets and dried off if necessary.

Designed, Developed and Proven in the USA by Hydro-Photon, Inc.

P.O. Box 675, 262 Ellsworth Rd.
Blue Hill, Maine 04614 USA
Toll-Free in US: (888)-STERIPEN
Phone: (207) 374-5800
Fax: (207) 374-5100
info@steripen.com
www.steripen.com

© 2008 Hydro-Photon, Inc.
All rights reserved.
MANPF0805

